





The scaling of this drawing cannot be assured

Revision	Date	Drm	Ckd
A	Masterplan updated	30.08.16	AFS MY
B	Aerial and red line updated	02.09.16	AFS MY
C	Updated after public construction	09.09.16	AFS MY
D	Layout fix& updated. Fixed access.	22.09.16	AFS MY

LEGEND

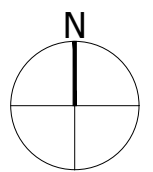
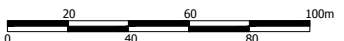
-  Site Boundary
-  School Boundary

- Existing Grass Sports Field
- Proposed cabledome max height 10.5m
- Site Access (No dig construction within RPAs)
- Existing landscape bund
- Existing notable trees
- Proposed entrance pergola feature
- Proposed permeable parking
- Additional boundary landscape screening
- Grasscrete surface
- Coach parking (Grasscrete)
- Existing cycle storage
- Access road
- Feature paving
- Entrance plaza
- Store room
- Generator and housing
- Feature trees
- Pedestrian path and ramp
- Columnlar trees
- Existing cricket nets
- Existing long/ triple jump
- Proposed hedge
- Temporary seasonal rugby/ football protective net
- Wildflower planting

FOR PLANNING

Project
Land at the Forest School
Winnersh
Drawing Title
Illustrative Landscape Plan

Date	Scale	Drawn by	Check by
29.06.16	1:500@A1	AFS	CH
Project No	Drawing No		Revision
26346	RG-L-02-1		D



**BARTON
WILLMORE**

Planning • Master Planning & Urban Design
Architecture • Landscape Planning & Design • Project Services
Environmental & Sustainability Assessment • Graphic Design

bartonwillmore.co.uk



Offices at Reading London Bristol Cambridge Cardiff Ebbw Vale Edinburgh Leeds Manchester Salford

This page is intentionally left blank